

As of March 17th, 2021

Who is Currently Getting Vaccinated? Educators, healthcare, public safety and childcare workers, those aged 65+, people with underlying health conditions, and essential and food service workers are now eligible to receive the COVID-19 vaccine. To learn more, visit: <https://mn.gov/covid19/vaccine/whos-getting-vaccinated/index.jsp>

If I am Eligible, Where Can I Find My Vaccine?

- 1) Connect with your healthcare provider if they have not already contacted you.
- 2) Find a Vaccine Location - All vaccinations are by appointment only, and each provider manages its own schedules and appointments. Not all providers are offering appointments to people in all priority groups. There is still a limited amount of vaccine, so appointments may not be available everywhere.
<https://mn.gov/covid19/vaccine/find-vaccine/locations/index.jsp>
- 3) Use the State’s Vaccine Connector to register for COVID-19 vaccine information and to find out when, where, and how to get a COVID-19 vaccine: <https://mn.gov/covid19/vaccine/connector/>

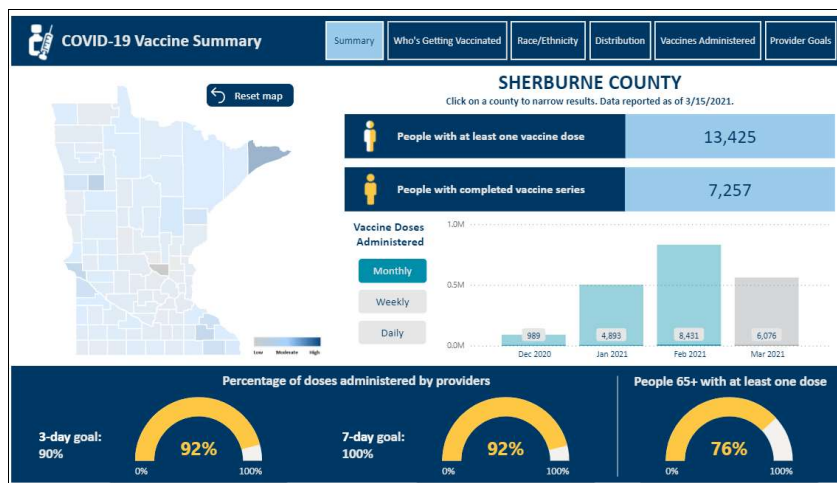
Who is Getting Vaccinated by Sherburne County Public Health? Currently, as a local public health agency, Sherburne County is assisting the State of MN in vaccinating eligible Minnesotans. Eligible Minnesotans can sign up for a Sherburne County Clinic by emailing covid@co.sherburne.mn.us, by completing a COVID-19 Vaccine Interest Form at: <https://www.co.sherburne.mn.us/869/COVID-19>, or by calling the COVID-19 Hotline at (763) 765-4156. If you are an eligible educator or childcare worker, your employer will contact you.

With only a limited supply of COVID-19 vaccine in Minnesota, Sherburne County vaccination clinics are both small and targeted at specific eligible populations. Here is Sherburne County’s Vaccination Clinic Schedule:

- **Last Week (MAR 8-12):** Four clinics – 1st and 2nd doses for 65+ residents, E-12 Educators, and 1st doses for essential workers (if approved by the State) - *Approx. 1100 doses total.*
- **This Week (MAR 15-19):** Three clinics, including two mobile clinics offsite – 1st doses for food manufacturing and other essential workers - *Approx. 360 doses total.*



How is Sherburne County Doing? Sherburne County Public Health has administered about 25% of all local vaccinations. Taking into account all County vaccination locations, here is our current COVID-19 Vaccine Summary:



Is the Vaccine Safe? For most all, YES. Learn more at: <https://www.cdc.gov/coronavirus/2019-ncov/vaccines/facts.html>

Is the Vaccine Free? Vaccine purchased with U.S. taxpayer dollars are free. Your insurance may be charged a fee for vaccine administration, but you cannot be denied a vaccine if you are unable to pay.

Additional Resources:
MN COVID-19 Hotline: (833) 431-2053
CDC Website: <https://www.cdc.gov/>

*Sherburne County Public Health has administered over **6,100** vaccine doses since December 26th!*